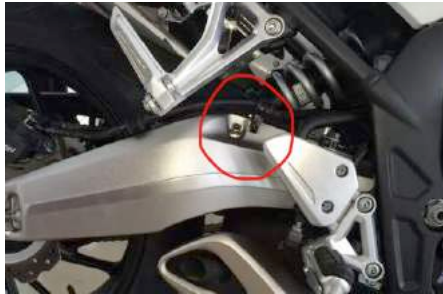


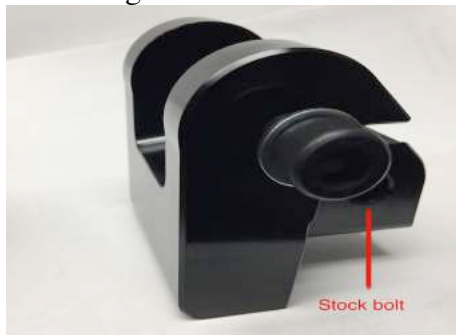


PSR LOWERING LINK INSTRUCTIONS HONDA CBR650F 14-17

1. Lift the bike with a rear stand and a front stand.
2. Lift the bike from the rearsets using PSR PowerJack or a floor jacks from both side of the bike.
3. Raise both jacks at the same time. The Rear wheel has to be off the ground to release the compression on the shock.
4. Remove the fender.
5. Remove the bolt.



6. Move the shock away to place the lowering link.
7. Install the lowering link.



8. Reinstall the stock bolt on the lower hole.
9. Install the supplied bolt on the top hole. This bolt will go through the shock mount.
10. Torque all bolts to service manual spec. Using blue loctite is recommended on all nuts and bolts.
11. Trim the fender so that it won't touch the lowering link.

Professional installation is recommended. Always use proper safety measures during the install of this product. Do not try to install this product without proper tools, recently calibrated torque wrench, correct torque specifications from factory service manual, safety goggles and gloves. The motorcycle must be in a fixed secure position before the install process begins. PSR is not responsible for any losses, damages or claims resulting from injuries sustained or alleges to have been sustained by the installation of this product not installed by a certified mechanic experienced in the installation of component parts on motorcycles. PSR is not responsible for the functionality of the product not properly installed or under circumstances in which there has been a modification to the product by any person not employed by PSR.